

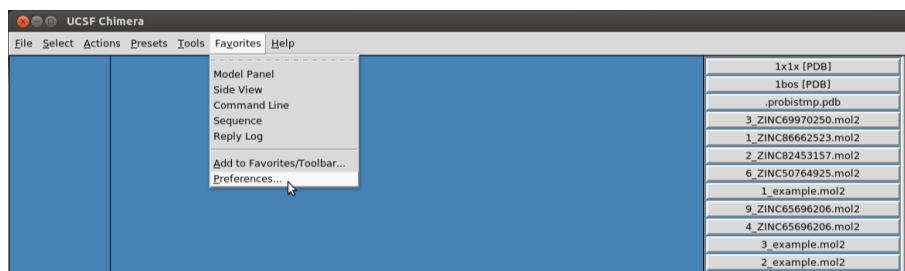
# ProBiS - UCSF Chimera Plugin: Installation Guide

June 3, 2016

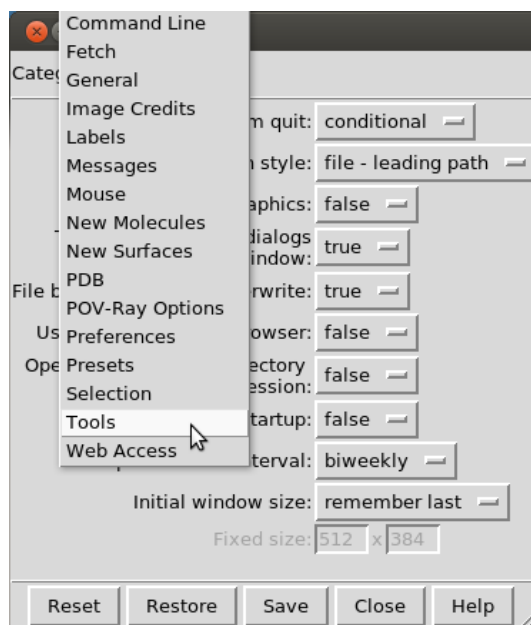
1. Create a new directory that will contain the plugin.
2. Download and unzip the file **ProBiS.zip** in this new directory.



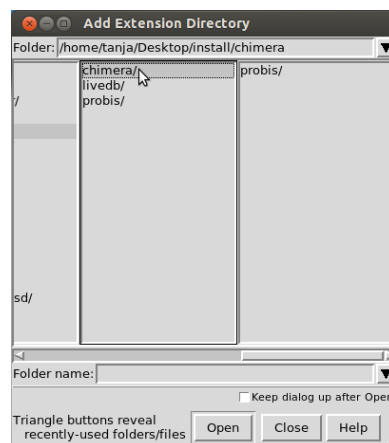
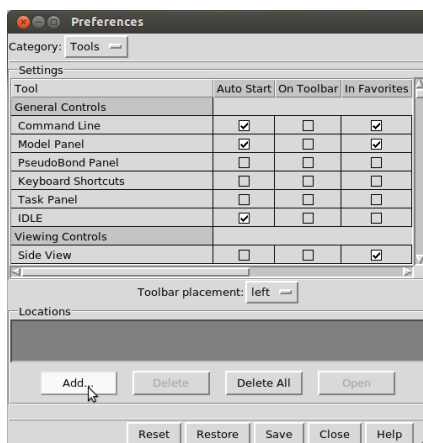
3. Open Chimera and go to **Favorites** → **Preferences**.



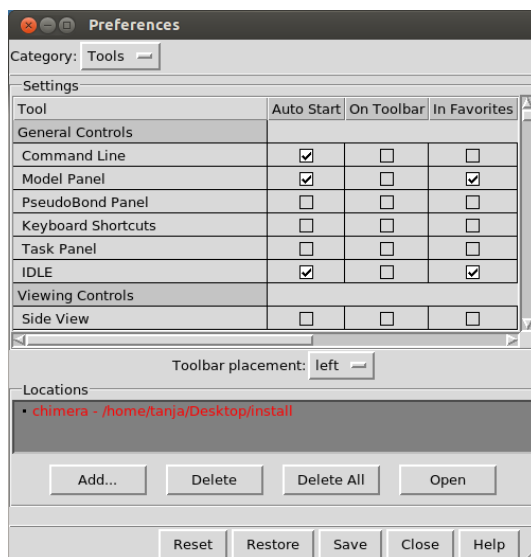
4. Select **Tools** category.



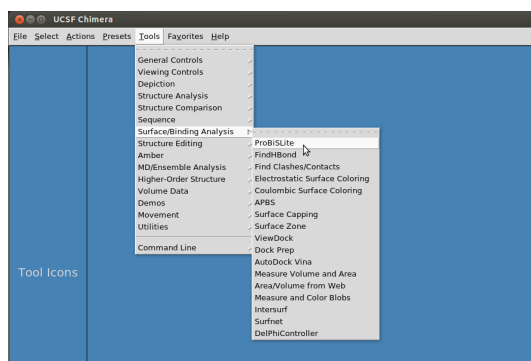
5. Add the directory containing the probis folder to the **Locations**.



6. Click **Save** and then **Close**.

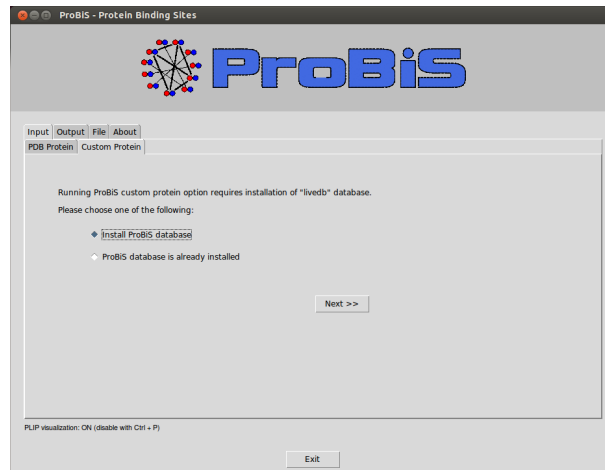


7. The ProBiS module should appear under **Tools** → **Surface/Binding Analysis**.

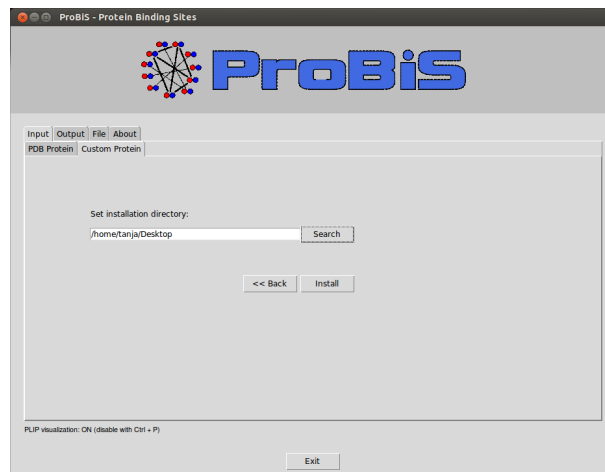


[Optional] Installation of ProBiS database:

1. To install ProBiS database (needed for custom protein calculations) click on **Custom Protein** tab. Choose **Install ProBiS database** and click **Next**.



2. Set the installation directory and click **Install**.



3. Installation of the ProBiS database should begin. When finished, a popup window will appear. Click **OK**.

